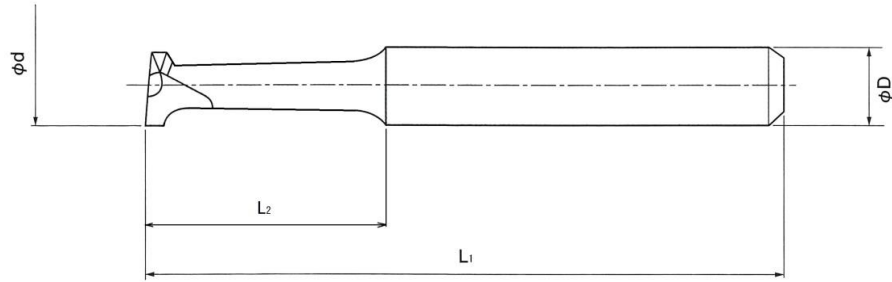




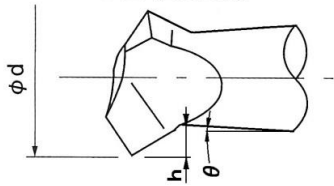
治具ボーラー用バイト 使用鋼種 MV10

本図はB型(止まり穴用)を示す

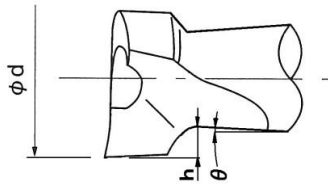


各先端部形状

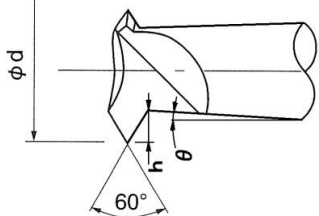
P型(通り穴用)



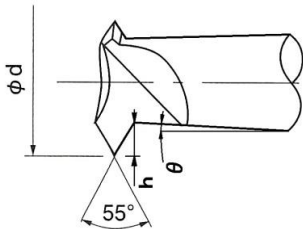
B型(止まり穴用)



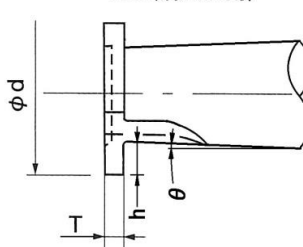
M型(60°ネジ切り用)



W型(55°ネジ切り用)



T型(溝入れ用)



P型(通り穴用)	B型(止り穴用)	φ D	L1	φ d	L2	h	θ	在庫
P00	B00	8	50	2.5	10	0.45	2°	●
P00L	B00L		125		14			●
P00S	B00S		50		10			●
P01	B01	8	60	3	20	0.55		●
P01L	B01L		125		●			
P01S	B01S		10		60			●
P02	B02	8	60	5	24	1.0		●
P02L	B02L		125		●			
P02S	B02S		10		60			●
P03	B03	8	65	7	26	1.55		●
P03L	B03L		125		●			
P03S	B03S		10		65			●
P04	B04	8	75	9	45	1.9	●	
P04L	B04L		125		80		●	
P04S	B04S		10		75		30	●
P05	B05	8	80	12	50	2.5	●	
P05L	B05L		125		80		●	
P05S	B05S		10		80		50	●
P06	B06	10	95	14	60	2.5	●	
P06L	B06L		125		90		●	

M型(60°ネジ切用)	W型(55°ネジ切用)	φ D	L1	φ d	L2	h	θ	在庫	
M01	W01	8	60	3	20	0.55	2°	●	
M01L	W01L		125		●				
M02	W02		60		5			24	1.05
M02L	W02L		125	●					
M03	W03		65	7	26	1.6		●	
M03L	W03L		125	●					
M04	W04		75	9	45	1.75	0	●	
M04L	W04L				125			80	●
M05	W05				80			12	50
M05L	W05L		125	80	●				
M06	W06		10	95	14	60		2.5	●
M06L	W06L			125		90			●

T型(溝入用)	φ D	L1	φ d	L2	T(刃巾)	h	θ	在庫
T01	8	60	3	20	1.1 (+0.14 -0)	0.55	2°	●
T01L		125				●		
T02		60				5		24
T02L		125	●					
T03		65	7	26				
T03L		125				●		
T04		75			9	45	2.25	●
T04L		125	80	●				
T05		80	12	50				2.5
T05L		125			80	●		
T06		10			95	14	60	
T06L			125	90	●			

●全点大阪セツタ-在庫